



Dubbo Local Environmental Plan 2011

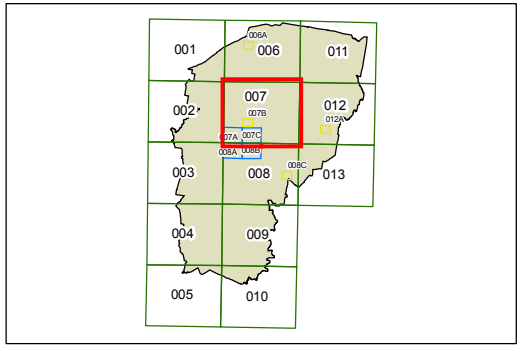
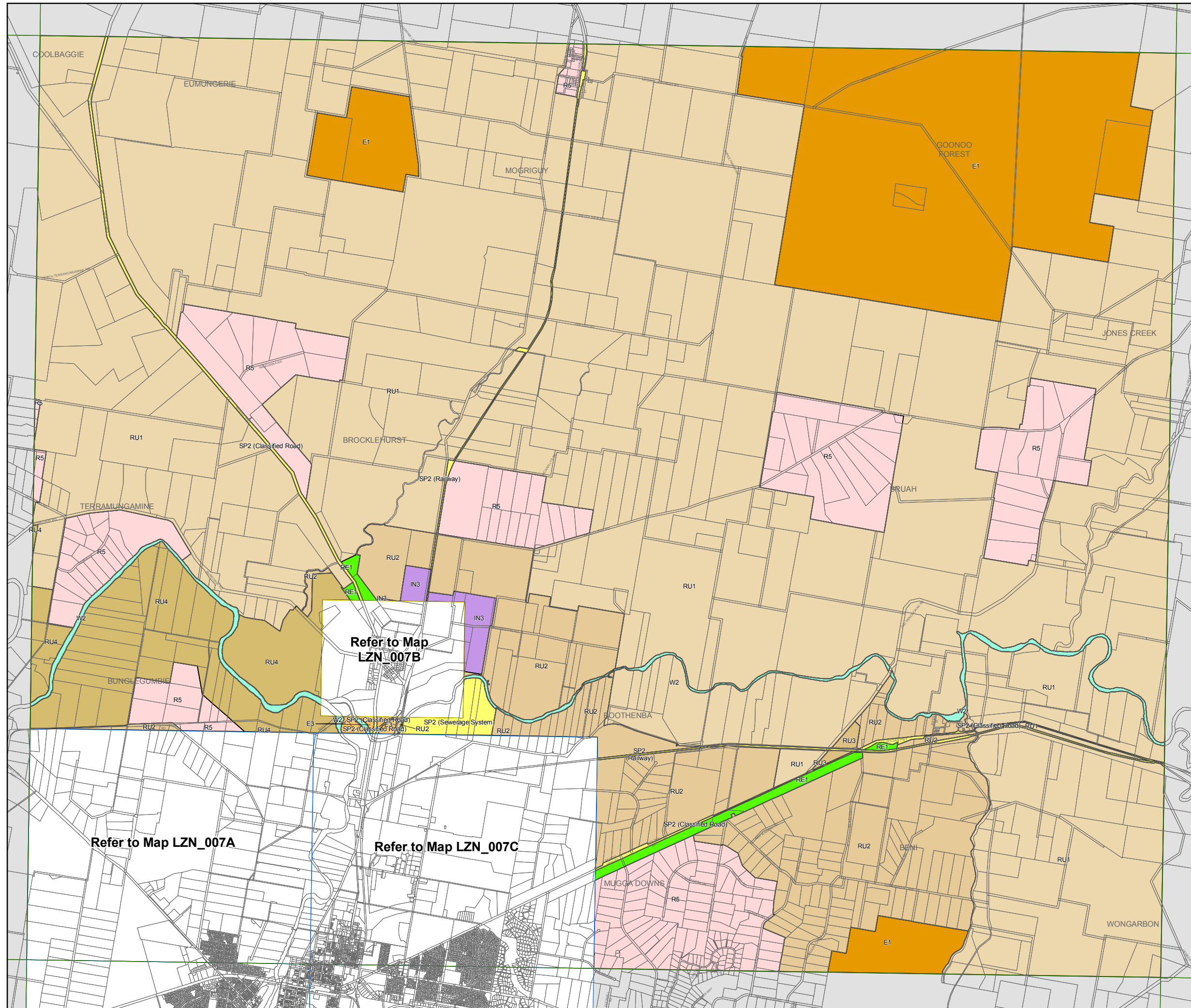
Land Zoning Map - Sheet LZN_007

Zone

- B1 Neighbourhood Centre
- B2 Local Centre
- B3 Commercial Core
- B4 Mixed Use
- B5 Business Development
- B6 Enterprise Corridor
- B7 Business Park
- E1 National Parks and Nature Reserves
- E3 Environmental Management
- IN2 Light Industrial
- IN3 Heavy Industrial
- R1 General Residential
- R2 Low Density Residential
- R5 Large Lot Residential
- RE1 Public Recreation
- RE2 Private Recreation
- RU1 Primary Production
- RU2 Rural Landscape
- RU3 Forestry
- RU4 Primary Production Small Lots
- RU5 Village
- SP2 Infrastructure
- SP3 Tourist
- W2 Recreational Waterways

Cadastral

Cadastral 29/04/2009 © Land and Property Information (LPI)
Addendum data 29/04/09 © Dubbo City Council



Projection: GDA 1994
MGA Zone 55
Map identification number: 2600_COM_LZN_007_080_20110907

Refer to Map
LZN_007B

Refer to Map LZN_007A

Refer to Map LZN_007C