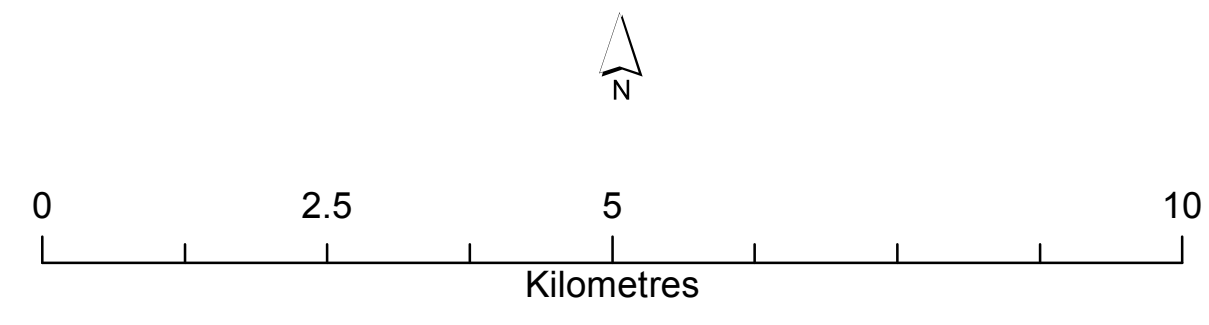
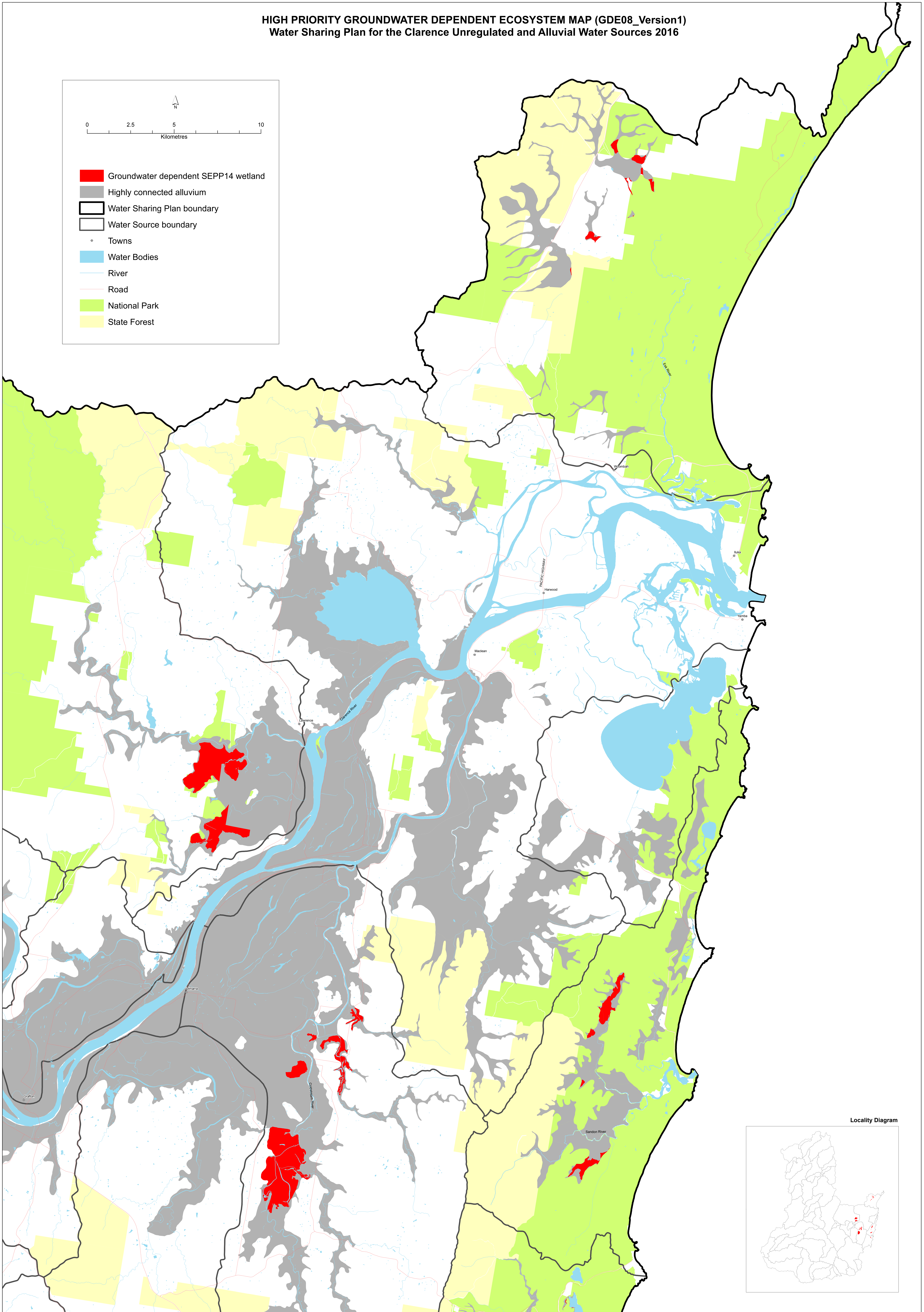


HIGH PRIORITY GROUNDWATER DEPENDENT ECOSYSTEM MAP (GDE08\_Version1)  
Water Sharing Plan for the Clarence Unregulated and Alluvial Water Sources 2016



- Groundwater dependent SEPP14 wetland
- Highly connected alluvium
- Water Sharing Plan boundary
- Water Source boundary
- Towns
- Water Bodies
- River
- Road
- National Park
- State Forest



Locality Diagram

